



Thermal Transfer - Line 956, North Waverly to East Sayre Substation

Project Overview

As part of our commitment to provide safe, reliable service to all our customers, New York State Electric and Gas (NYSEG), in conjunction with our parent company – Avangrid, is updating the delivery system in our service areas. These upgrades comply with new electric transmission reliability requirements.

While making investments to meet the community's growing energy demands, we are working closely with our neighbors to ensure that all improvements are performed with minimal disruption to the environment and the communities we serve.

Project Information Line: 1.833.551.4200

Refer to: Thermal Transfer L956

Email: outreach@nyseg.com

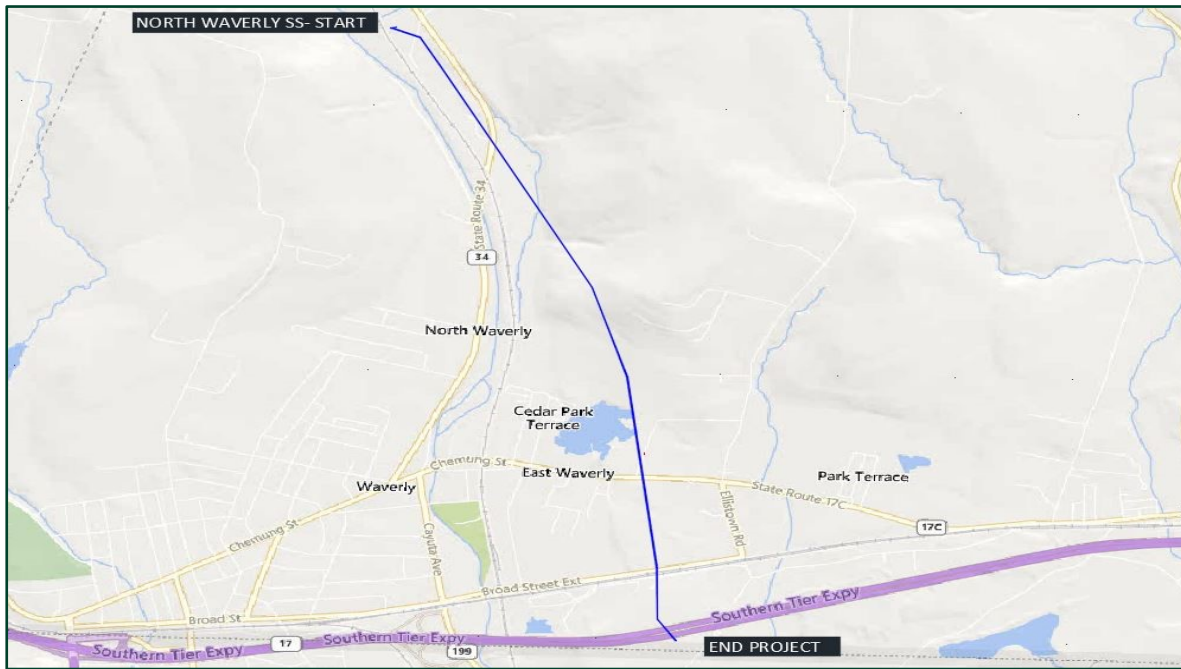
Website: NYSEG > Reliable Service

Project Purpose and Need

In a recent study of the transmission lines, it was determined that Line 956 needed an upgrade on the lines and structures to increase capacity and reliability. NYSEG is planning the rebuild of L956, which extends approximately three miles from the North Waverly Substation to the East Sayre Substation.

Project Scope Includes:

- Installing new conductor and fiber optic cables
- Installing 26 new steel pole structures
- Right-of-Way Clearing of vegetation



Line 956 extends approximately 3 miles from NYSEG North Waverly Substation to the East Sayre Substation. Line 956 is located in the Town of Barton, Tioga County, NY and partially in East Sayre, Bradford County, PA.

Regional Benefits

- The upgrades will improve the reliability and resiliency of the entire transmission system, ensuring that the safe and reliable distribution of power is maintained.
- The upgraded transformer will enable the substation to meet the growing demand for additional power in the region.
- Modernization of the substation's technological capabilities will provide critical redundancy options throughout the network.

Project Details

Crews will be performing preliminary activities (vegetation management and removals) in the fall of 2024 in certain locations of the electrical line Right of Way (ROW) to help mitigate future outages created by tree issues. These activities help maintain the proper functioning of our network and our infrastructure within our ROW and land parcels. Please note, we will not be applying pesticides or herbicides as part of this effort.

Construction work is scheduled to begin in the spring of 2025 and conclude in the later part of fall 2025, dependent on multiple conditions which could impact the schedule. Most of the construction activities will be conducted during regular business (daylight) hours Monday through Friday with weekend work occurring only on an as needed basis.

Project Location

Municipalities:	Town of Barton, Tioga Co., NY; Bradford Co., PA
-----------------	---

Permitting required:	Q2 2025
----------------------	---------

Estimated Timetable *(subject to change)*

Initial Field Work:	Q4 2024
---------------------	---------

Construction Start:	Q2 2025
---------------------	---------

In Service Date:	Q3 2025
------------------	---------